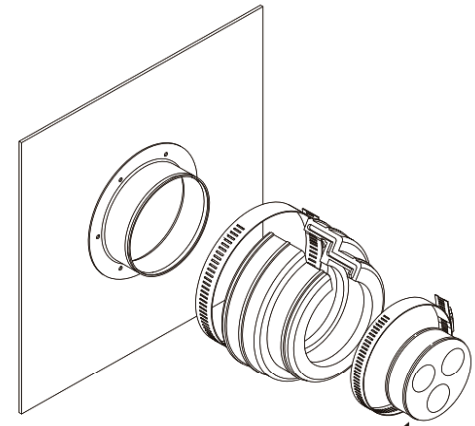
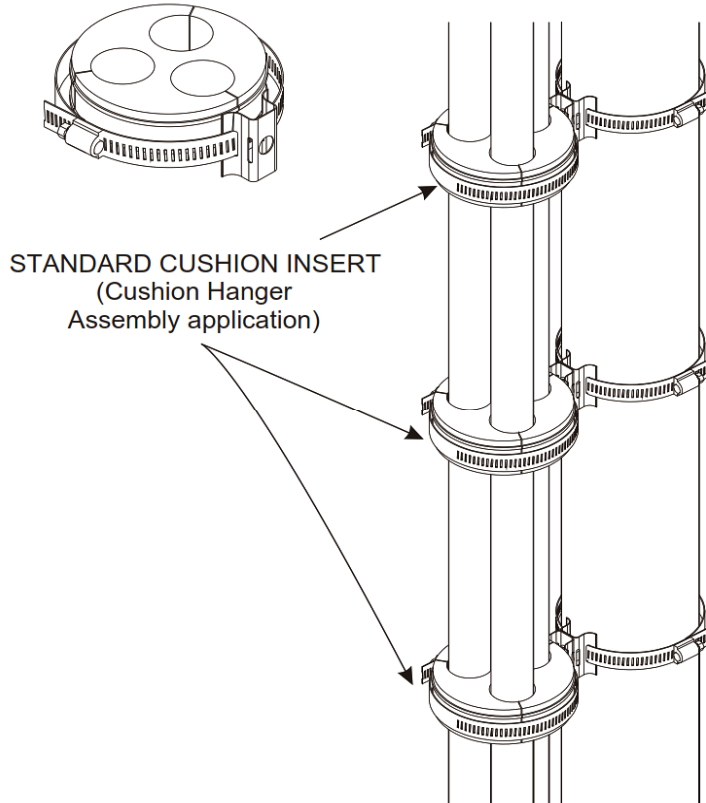


Standard Cushion Inserts for Coaxial Cable Applications

TYPICAL APPLICATIONS



SPECIFICATIONS

PRODUCT DESCRIPTION

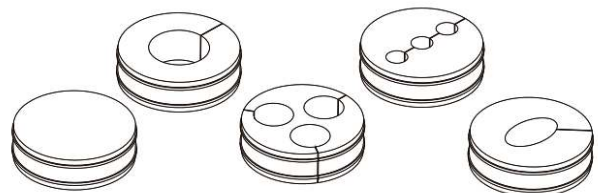
Standard Cushion Inserts provide a weather tight seal around coaxial cable or elliptical waveguide when penetrating building walls or equipment bulkheads. Standard Cushion Inserts can be ordered individually, in boot assemblies, or with cushion hanger assembly kits to meet any application requirements. Standard cushion inserts are constructed from UV-resistant EPDM rubber which is durable in extreme temperatures and harsh environmental conditions.

NOTICE

Installation of this product should only be performed by trained, qualified and experienced personnel. Installation instructions for this product should be read thoroughly before installation is performed. The manufacturer and supplier of this product disclaims any liability or responsibility for the results of improper or unsafe installation practice.

MATERIAL LIST

(1) Standard Cushion



REQUIRED TOOLS

Boot Assemblies

(1) Flathead
Screwdriver
or
(1) 5/16"
Nut Driver

Cushion Hanger Assemblies

(1) Flathead
Screwdriver
or
(1) 5/16"
Nut Driver

